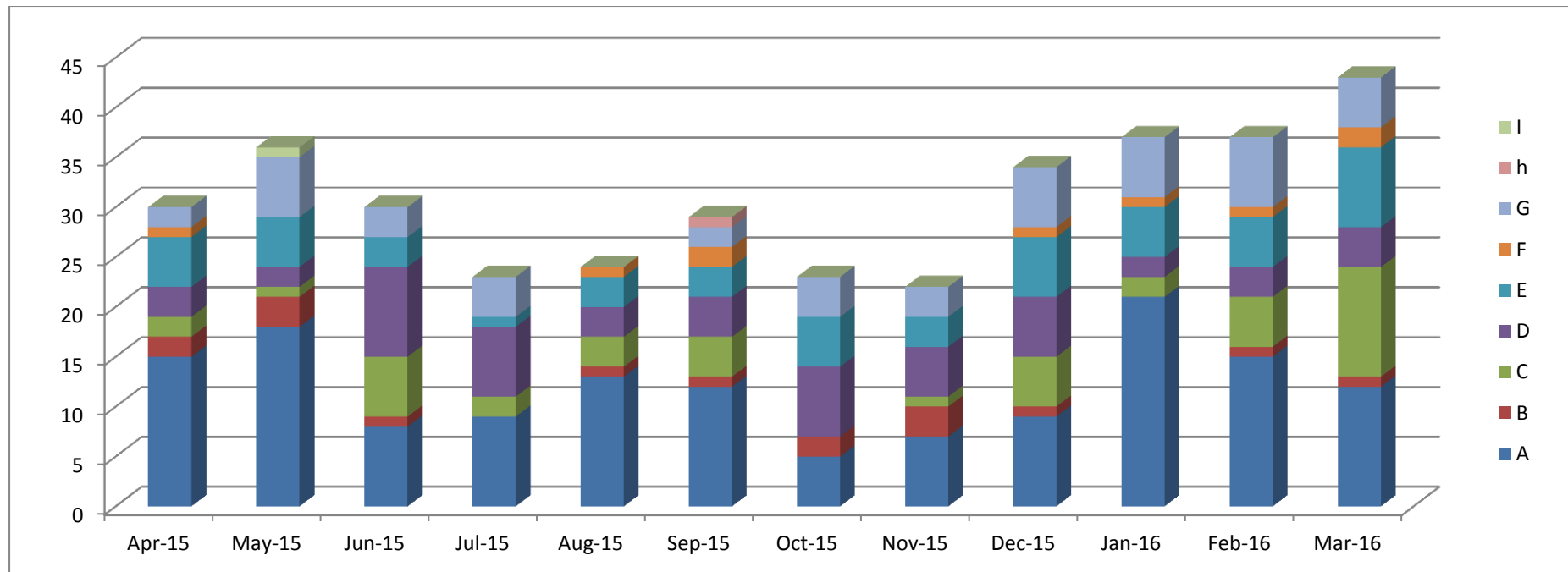


Number of Delayed Patients by category on the last Thursday of the reporting period



- Category Key:
- A = waiting assessment by health or social care professional
 - B = Waiting for funding for residential care or joint funding
 - C = Waiting further NHS care (non acute) including Intermediate care
 - D(1&2) = waiting for Residential Care Home placement/availability
 - E = waiting domiciliary care package
 - F = waiting for community equipment
 - G = waiting for choice of residential care home to be found
 - H = Disputes regarding readiness for
 - I = Housing